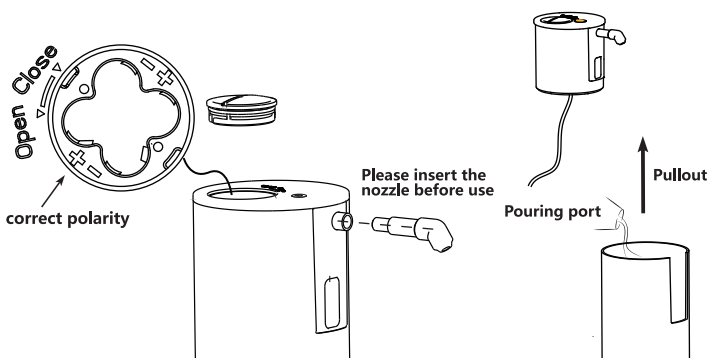


## Automatic Foam Dispenser

## Automatic Foam Dispenser

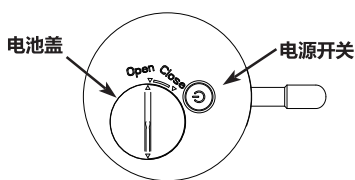


### Operation Instructions

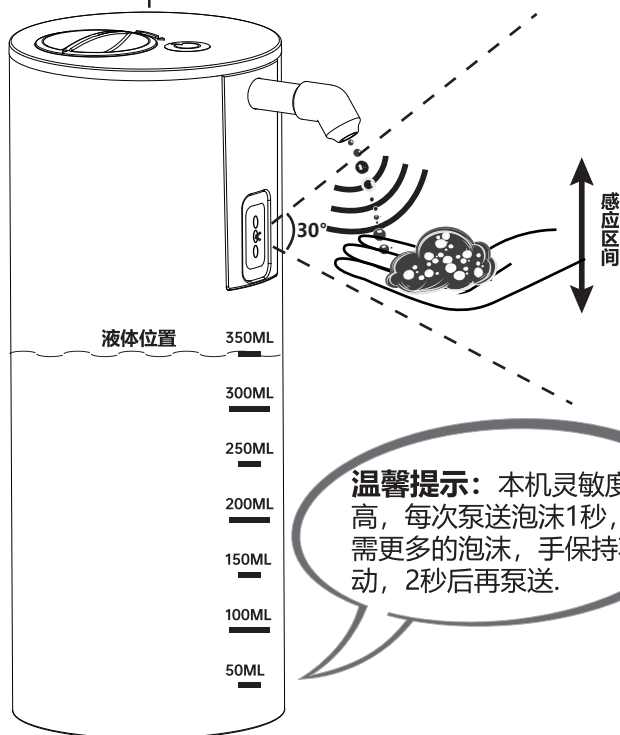
1. Please rotate the cover on the top of product. Insert 4AAA 1.5V batteries and then close the cover.
2. Press the switch on the top of the device. You will see the light is flashing. Now the device is normally working.
3. Pull out the top cover and add the liquid.
4. For the first time you use, please try a few times first. Then the foam will fill the tube and then will come out.
5. The best inductive range is within 30°. Each time it will pump out around 1seconds. If you need more liquid, please hold on your hand and wait for around 2 seconds. Then more foam will come out soon.

### Cautions

1. When the liquid level is low, please add liquid. Otherwise the dispenser will not pump out any foam.
2. When light is flashing, it means battery low. Please change the batteries.
3. Please do NOT shake the devices to avoid any serious damage.
4. Please take out the battery if long time no use.
5. Please make sure the liquid cover is well mounted. Otherwise the foam will come out.
6. This device is designed for bathroom and kitchen.
7. Please do NOT place the device in water to avoid any damage.
8. Please do NOT place the device in direct sunshine to avoid any damage.
9. Normal working temperature is 3°C~40°C.



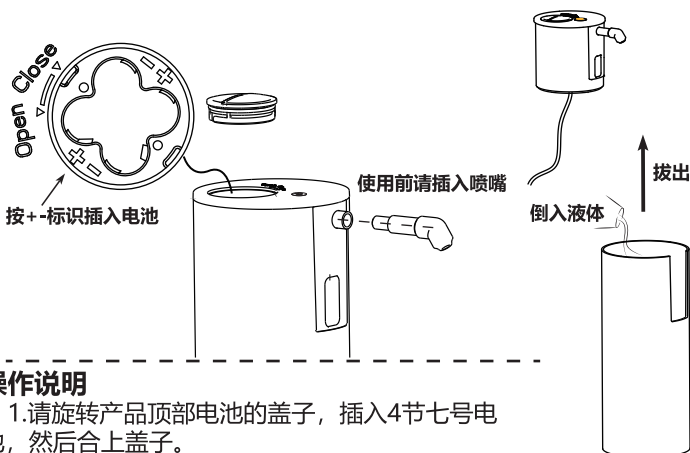
免接触



**温馨提示：**本机灵敏度高，每次泵送泡沫1秒，如需更多的泡沫，手保持不动，2秒后再泵送。

## 自动感应泡沫机

## 自动感应泡沫机



### 操作说明

- 1.请旋转产品顶部电池的盖子，插入4节七号电池，然后合上盖子。
- 2.按下开关，你会看到指示灯闪烁，皂液器正常启动。
- 3.拔出顶部的盖子，倒入液体。
- 4.第一次使用，请先尝试几次，待到泡沫充满软管，就会正常喷出。
- 5.最佳感应区间为30°范围内，每次喷出泡沫大概是1s，如果需要更多泡沫，手保持不动，2秒之后泡沫喷出。

### 注意事项

- 1.液位低时，请加液，否则泡沫机无法泵出更多泡沫。
- 2.当指示灯闪烁时，表示电池电量低，请更换电池。
- 3.请不要摇晃设备，以免造成设备损坏。
- 4.长时间不使用，请取出电池。
- 5.本设备专为浴室和厨房设计。
- 6.请不要把设备泡入水中，以免造成损坏。
- 7.避免阳光直射，以免造成损坏。
- 8.正常工作温度为3°C~40°C。